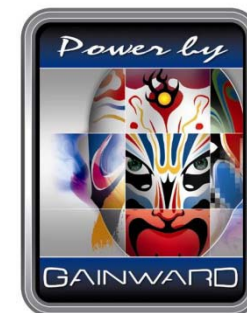
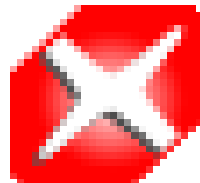


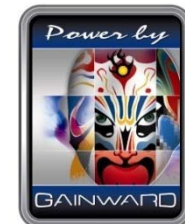
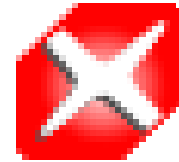
Gainward GTX 260 896MB TV Dual DVI (9368)

- Nvidia GeForce GTX 260 (D10U-20) with **576Mhz** core clock
- **192** stream processors with **1.242Ghz** shader clock
- **896MB** DDR3 memory (**448bits** width) with **999Mhz** clock rate (DDR1998)
- Dual DVI-I (dual-link) and HDTV out
- HDMI support (By dongle)
- Dual-link HDCP capable
- PCI Express version 2.0, providing up to 16GB/s bandwidth (2 times of PCI express v1.1)



The Key Message of Gainward GTX260

- **2nd generation unified architecture** delivers 50% more gaming performance over the first generation through **192** enhanced processor cores
- **896MB** display memory (**999Mhz** clock rate) with **448bits** memory interface provides **111.9GB/sec** memory bandwidth
- **PhysX™ Ready** enables a totally new class of physical gaming interaction
- **Nvidia CUDA™ Technology** can accelerate the most demanding system tasks – such as video transcoding – up to 7 times of performance over traditional CPUs
- **3-way SLI** delivers up to 2.8x the performance of single graphics card configuration
- **Nvidia HybridPower™** provides maximum power saving feature when running non graphically-intensive application



GTX260 and the accessories



6 to 8 Power Cable

2-wire SPDIF Cable (internal)

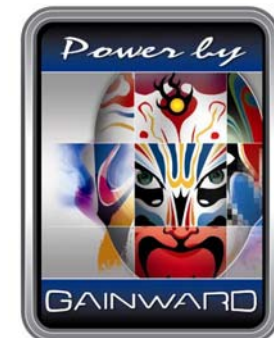
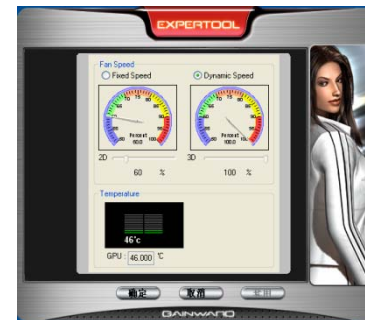
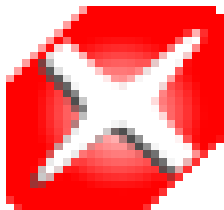
DVI to HDMI converter

DVI to VGA converter

Smart Control Utility “EXPERTool™”

- Reliable and easy to use
- The first utility in the market for **core/memory/shader** clock setting
- Smart fan control feature
- GPU temperature monitoring. over-heated alert. over-heated clocking down. over-heated power down

EXPERTool



Display Configuration of GTX260



Single display :

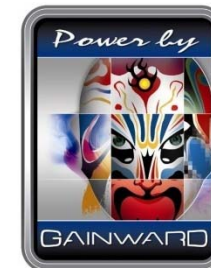
DVI
HDMI (with DVI to HDMI converter)
CRT (with DVI to VGA converter)

Dual display :

DVI + DVI
DVI + CRT
DVI + HDMI
DVI + TV-out

LED indicator: "green" for proper power connection
,"red" for incorrect power connection

Adding internal SPDIF cable for HDMI interface



Comparison Table

	GF9800GX2 pricey	GF GTX 260 balance	GF GTX 280 expensive
Board Size	4.376" x 10.5"	4.376" x 10.5"	4.376" x 10.5"
Memory clock (MHz)	1000 (DDR2000)	999 (DDR1998)	1107 (DDR2214)
Memory Bandwidth	128GB/s (256bits x 2)	111.9GB/s (448bits)	141.7GB/s (512bits)
Core clock (MHz)	600	576	602
Shader clock (MHz)	1500	1242	1296
No. of Stream Processor	128 x 2	192	240
System Power Req.	580W	500W	550W
External Power connector	6 pin + 8 pin	2 x 6 pin	6 pin + 8 pin
Display output ports	Dual DVI + HDMI	Dual DVI + HDTV	Dual DVI + HDTV

Performance Table

Model	Mclk/Eclk	Memory Size	3DMark 2006 1920x1200	3DMark Vantage (Performance)	3DMark Vantage (Extreme)
GTX 280	1107/602	1024MB/512b	13615	10160	4869
GTX 260	999/576	896MB/448b	12592	8406	3834
GF9800GX2	1000/600	512MB/256b	14521	9525	3665
GF9800GTX	1100/675	512MB/256b	11301	5816	2104
GF8800GT	900/600	512MB/256b	9944	5074	1837
GF9600GT	900/650	512MB/256b	8384	3920	1376